



CURTAIN HEADINGS DESIGNS FOR TODAY'S INTERIORS

Milroe Soft Furnishings



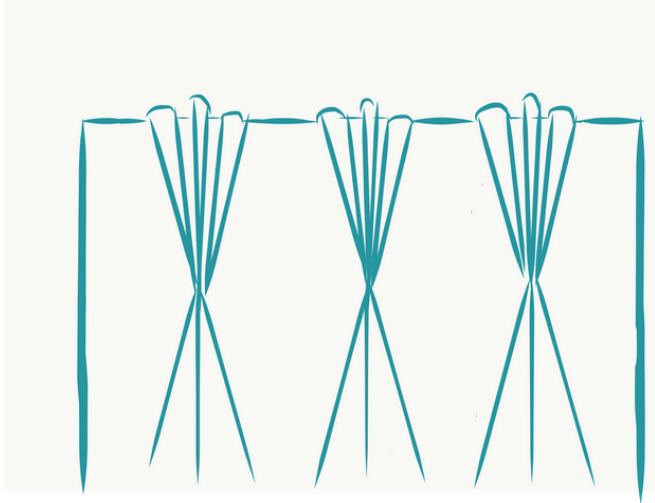
INTRO....

There are many many designs of curtain headings, This eBook is going to give a little insight into the most popular headings for made to measure curtains.

It covers the 2 staples of curtain design, double or triple pleated hand headings, and then the 2 most popular modern designs of Wave (sometimes referred to as Ripple) and Eyelet.



TRIPLE HAND PLEATED



The traditional triple pleat is perfect for most settings. It allows you to have plenty of fullness to show off lovely fabrics.

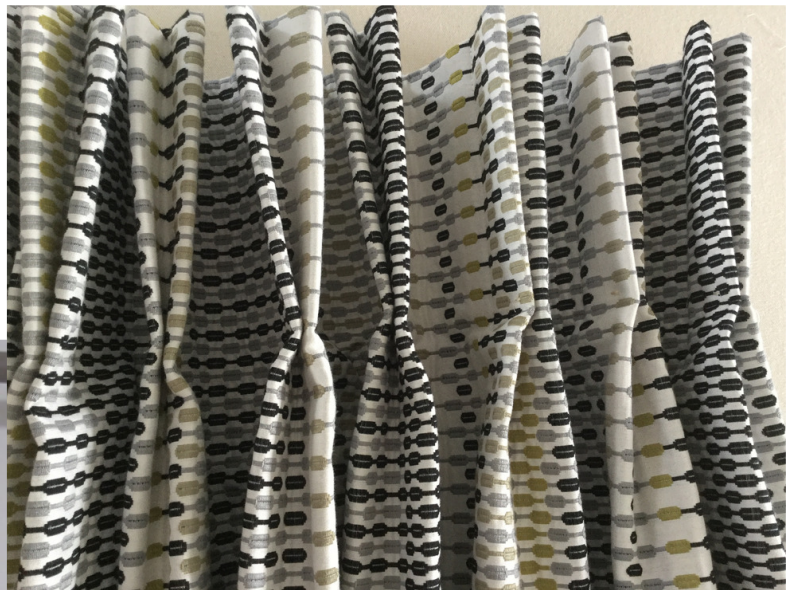
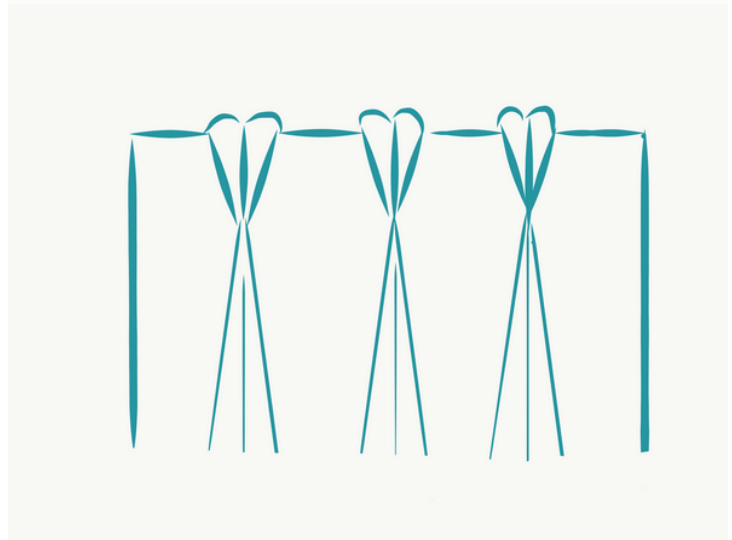


The heading can be of various depths. So, for longer curtains you can have a longer pleat.

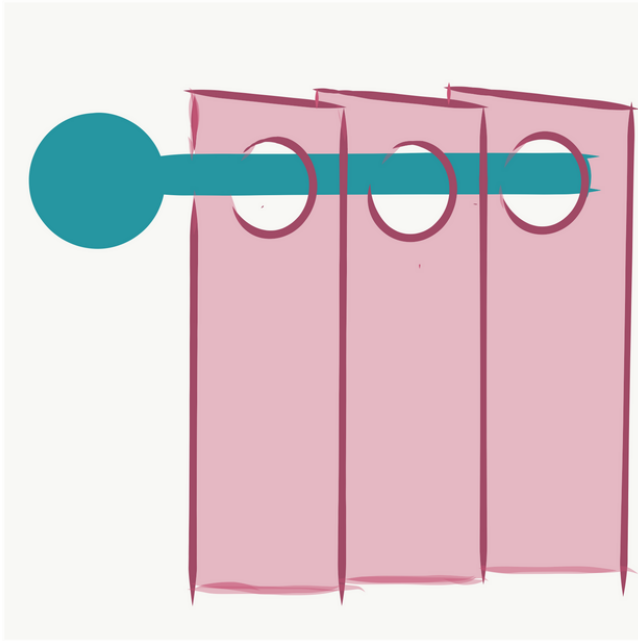


DOUBLE HAND PLEATED

The double pleat is less fussy, and is great option for modern fabrics and homes. You can still have good amount of fullness, but if you prefer you can get away with a little less.



EYELET HEADING



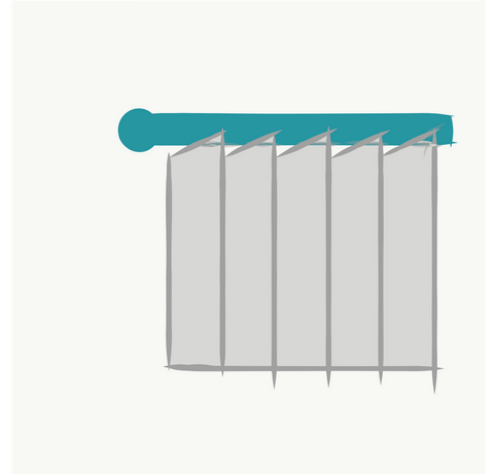
These first appeared a couple of decades ago and have become a firm favourite. You can choose from a wide range of eyelet colours.



WAVE HEADING

Wave Headings give a clean crisp modern look that is hard to beat. But don't be deceived, it is the most mathematical of headings! Absolutely ideal for modern bi-fold doors and in voile fabrics.

It is a beautiful neat heading.



ABOUT US

Hello, I am Fran and I run Milloe Soft Furnishings. Fully trained with City and Guilds and have been in the interiors industry for well over a decade,

I run a workroom in West Horsley, Surrey which is right on the edge of Surrey Hills.

If you need help with your curtain designs, of any soft furnishings. Get in touch!



info@milloe.co.uk



01483 283291

07791290740

www.milloe.co.uk

